



India Meteorological Department  
(Ministry of Earth Sciences)

BULLETIN NUMBER: 03 (AS/03/2021)

TIME OF ISSUE: 1930 HOURS IST

DATED: 07.11.2021

FROM: INDIA METEOROLOGICAL DEPARTMENT (FAX NO. 24643965/24699216/24623220)

TO: CONTROL ROOM, NDM, MINISTRY OF HOME AFFAIRS (FAX.NO. 23093750)  
CONTROL ROOM NDMA (FAX.NO. 26701729)  
CABINET SECRETARIAT (FAX.NO.23012284, 23018638)  
PS TO HON'BLE MINISTER FOR S & T AND EARTH SCIENCES (FAX NO.23316745)  
SECRETARY, MOES, (FAX NO. 24629777)  
H.Q. (INTEGRATED DEFENCE STAFF AND CDS) (FAX NO. 23005137/23005147)  
DIRECTOR GENERAL, DOORDARSHAN (23385843)  
DIRECTOR GENERAL, AIR (23421105, 23421219)  
PIB MOES (FAX NO. 23389042)  
UNI (FAX NO. 23355841)  
D.G. NATIONAL DISASTER RESPONSE FORCE (NDRF) (FAX NO. 26105912, 2436 3260)  
DIRECTOR, PUNCTUALITY, INDIAN RAILWAYS (FAX NO. 23388503)  
CHIEF SECRETARY, MAHARASHTRA (FAX NO 022-22028594)  
CHIEF SECRETARY, GUJARAT (FAX NO 079-23250305)  
ADMINISTRATOR, DAMAN, DIU, DADRA & NAGAR HAVELI (FAX NO 0260-2230775)  
CHIEF SECRETARY, GOA (FAX NO 0832-2415201)  
CHIEF SECRETARY, KARNATAKA (FAX NO 080-22258913)  
CHIEF SECRETARY, KERALA (FAX NO 0471-2327176)  
ADMINISTRATOR, LAKSHADWEEP (FAX NO 04896-26284)  
CHIEF SECRETARY, ANDAMAN & NICOBAR ISLANDS (FAX NO. 03192- 232656)  
CHIEF SECRETARY, ANDHRA PRADESH (FAX NO. 0863-2441029, 08645-246600)  
CHIEF SECRETARY, TAMIL NADU (FAX NO 044-25672304)  
CHIEF SECRETARY, PUDUCHERRY (FAX NO 0413-2334145)

Sub: (a) Depression over Eastcentral Arabian Sea

(b) Likely formation of a Low Pressure Area over southeast Bay of Bengal, its intensification & movement towards north Tamil Nadu coast during 09<sup>th</sup>-11<sup>th</sup> November 2021.

(a) Depression over Eastcentral Arabian Sea

The Depression over eastcentral Arabian Sea moved northwestwards with a speed of 05 kmph during past 6 hours and lay centred at 1730 hrs IST of today, the 7<sup>th</sup> November, 2021, over Eastcentral Arabian Sea near latitude 14.3°N and longitude 67.0°E, about 810 km southwest of Mumbai (Maharashtra) & 740 km west-southwest of Panjim (Goa). It is likely to move west-northwestwards and maintain the intensity of a Depression during next 36 hours and weaken gradually thereafter.

As the system is very likely to move west-northwestwards **away from the Indian coast no adverse impact is likely over the Indian landmass.**

Forecast track and intensity are given in the following table:

Date/Time (IST)	Position (Lat. °N/ long. °E)	Maximum sustained surface wind speed (Kmph)	Category of Cyclonic Disturbance
07.11.21/1730	14.3/67.0	45-55 gusting to 65	Depression
08.11.21/0530	14.6/66.5	45-55 gusting to 65	Depression
08.11.21/1730	14.8/66.1	40-50 gusting to 60	Depression
09.11.21/0530	15.0/65.6	30-40 gusting to 50	Well Marked low Pressure Area

## **Warnings:**

### **(i) Rainfall**

- No heavy rainfall warning in association with the system.

### **(ii) Wind warning**

- Squally wind speed reaching 45-55 kmph gusting to 65 kmph likely to prevail over eastcentral Arabian Sea during next 24 hours till 08<sup>th</sup> November evening and decrease marginally thereafter becoming 40–50 kmph gusting to 60 kmph over eastcentral & adjoining westcentral Arabian Sea for subsequent 12 hours. It would further decrease thereafter becoming 30-40 kmph gusting to 50 kmph from 09<sup>th</sup> November morning.

### **(iii) Sea condition**

- Sea condition will be rough to very rough over eastcentral & adjoining westcentral Arabian Sea till the early morning of 9<sup>th</sup> November 2021.

### **(iv) Fishermen Warning**

- Fishermen are advised not to venture into eastcentral & adjoining westcentral Arabian Sea till the early morning of 9<sup>th</sup> November 2021. (graphics enclosed).

## **(b) Likely formation of a Low Pressure area over southeast Bay of Bengal**

A cyclonic circulation lies over Southeast Bay of Bengal and adjoining equatorial Indian Ocean extending up to 4.5 Km above mean sea level. Under its influence, a low pressure area is likely to form over southeast Bay of Bengal and neighbourhood around 09<sup>th</sup> November 2021. It is likely to become more marked and move towards north Tamil Nadu coast during the subsequent 48 hrs.

In association with this formation, there would be a continuation of the ongoing active rain spell over Tamil Nadu during 7<sup>th</sup> – 11<sup>th</sup> November.

## **Warnings:**

### **(i) Rainfall (warning graphics enclosed)**

**7<sup>th</sup> Nov.:** Light to moderate rainfall at most places with heavy to very heavy rainfall & extremely heavy falls at isolated places very likely over Tamil Nadu and heavy to very heavy falls at isolated places over south coastal Andhra Pradesh.

**8<sup>th</sup> Nov.:** Light to moderate rainfall at most places with heavy to very heavy rainfall falls at isolated places very likely over Tamil Nadu and south coastal Andhra Pradesh.

**9<sup>th</sup> Nov.:** Light to moderate rainfall at most places with heavy to very heavy rainfall at isolated places very likely over Tamil Nadu.

**10<sup>th</sup> Nov.:** Light to moderate rainfall at most places with heavy to very heavy rainfall at a few places & extremely heavy falls at isolated places very likely over coastal Tamil Nadu and heavy to very heavy falls & extremely heavy falls at isolated places over south coastal Andhra Pradesh.

**11<sup>th</sup> Nov.:** Light to moderate rainfall at most places with heavy to very heavy rainfall at a few places & extremely heavy falls at isolated places very likely over coastal Tamil Nadu and heavy to very heavy falls & extremely heavy falls at isolated places over south coastal Andhra Pradesh.

### **(ii) Wind warning**

- Squally wind speed reaching 40-50 kmph gusting to 60 kmph likely to prevail over southeast Bay of Bengal on 9<sup>th</sup> & 10<sup>th</sup> November, over southwest Bay of Bengal during 10<sup>th</sup> – 11<sup>th</sup> November and along & off Tamil Nadu & adjoining south Andhra Pradesh coasts on 11<sup>th</sup> November.

(iii) **Sea condition**

- Sea condition will be rough to very rough over southeast Bay of Bengal on 9<sup>th</sup> & 10<sup>th</sup> November, over southwest Bay of Bengal during 10<sup>th</sup> – 11<sup>th</sup> November and along & off Tamil Nadu & adjoining south Andhra Pradesh coasts on 11<sup>th</sup> November.

(iv) **Fishermen Warning (in association with the likely formation of the system)**

- Fishermen are advised not to venture into southeast Bay of Bengal on 9<sup>th</sup> & 10<sup>th</sup> November, over southwest Bay of Bengal during 10<sup>th</sup> – 11<sup>th</sup> November and along & off Tamil Nadu & adjoining south Andhra Pradesh coasts on 11<sup>th</sup> November. (Graphics enclosed).
- Fishermen out in the sea are advised to return coast by 9<sup>th</sup> November.

(v) **EXPECTED IMPACT & ACTION SUGGESTED**

Localized Flooding of roads, inundation and water logging in low lying areas and closure of underpasses mainly in urban areas of the above region.

- Occasional reduction in visibility due to heavy rainfall.
- Disruption of traffic in major cities due to water logging in roads leading to increased travel time.
- Minor damage to kutcha roads.
- Possibilities of damage to vulnerable structure.
- Localized Landslides/Mudslides
- Damage to horticulture and standing crops in some areas due to inundation.
- It may lead to riverine flooding in some river catchments (for riverine flooding please visit Web page of CWC)
- Recreational & Tourism activities along the coastal belt may be restricted.

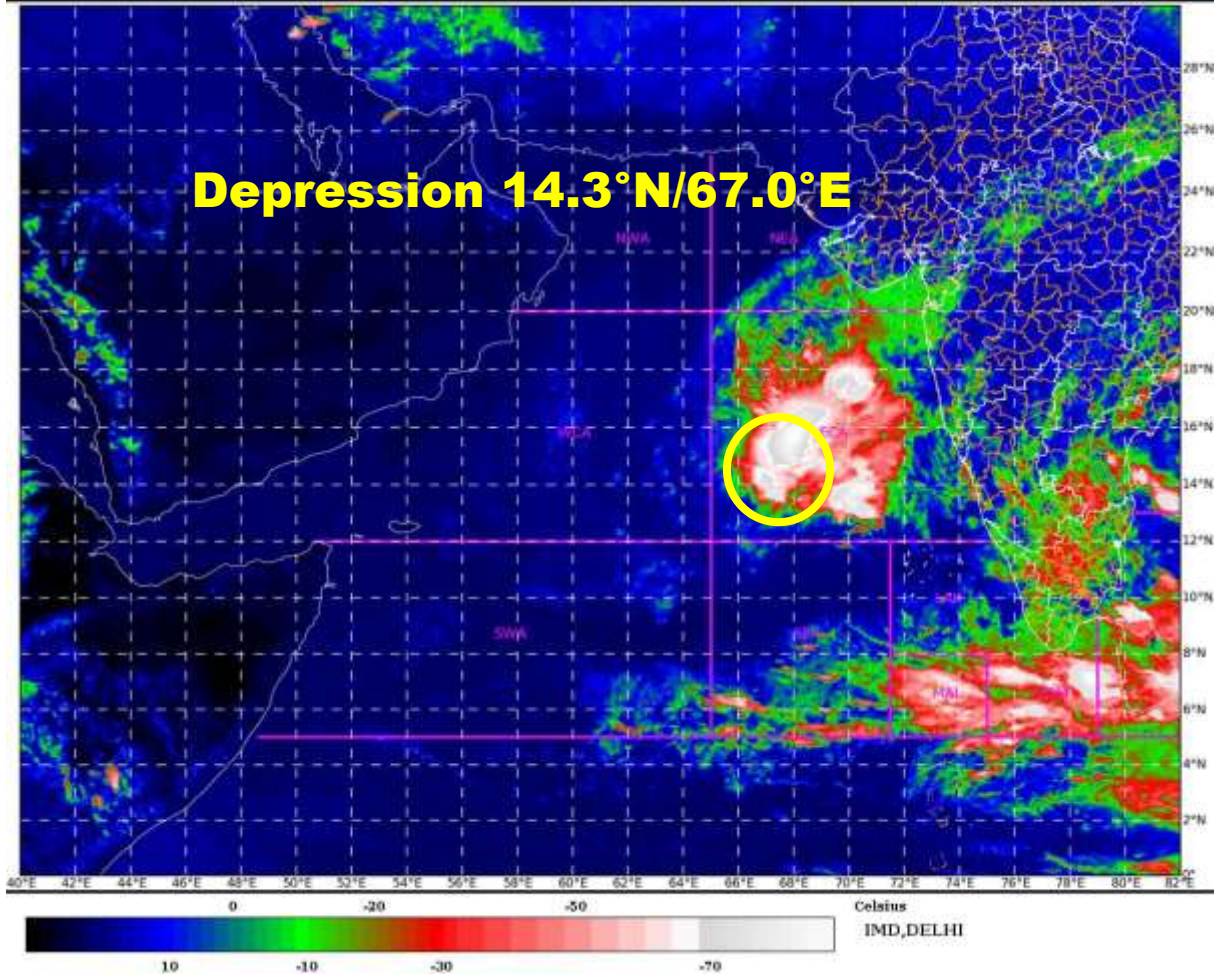
IMD is continuously monitoring the situation and updates would be sent regularly based on its development and further movement.

The next bulletin will be issued at 0230 hrs IST of tomorrow, the 08<sup>th</sup> November, 2021.

(RK Jenamani)  
Scientist-F, RSMC, New Delhi

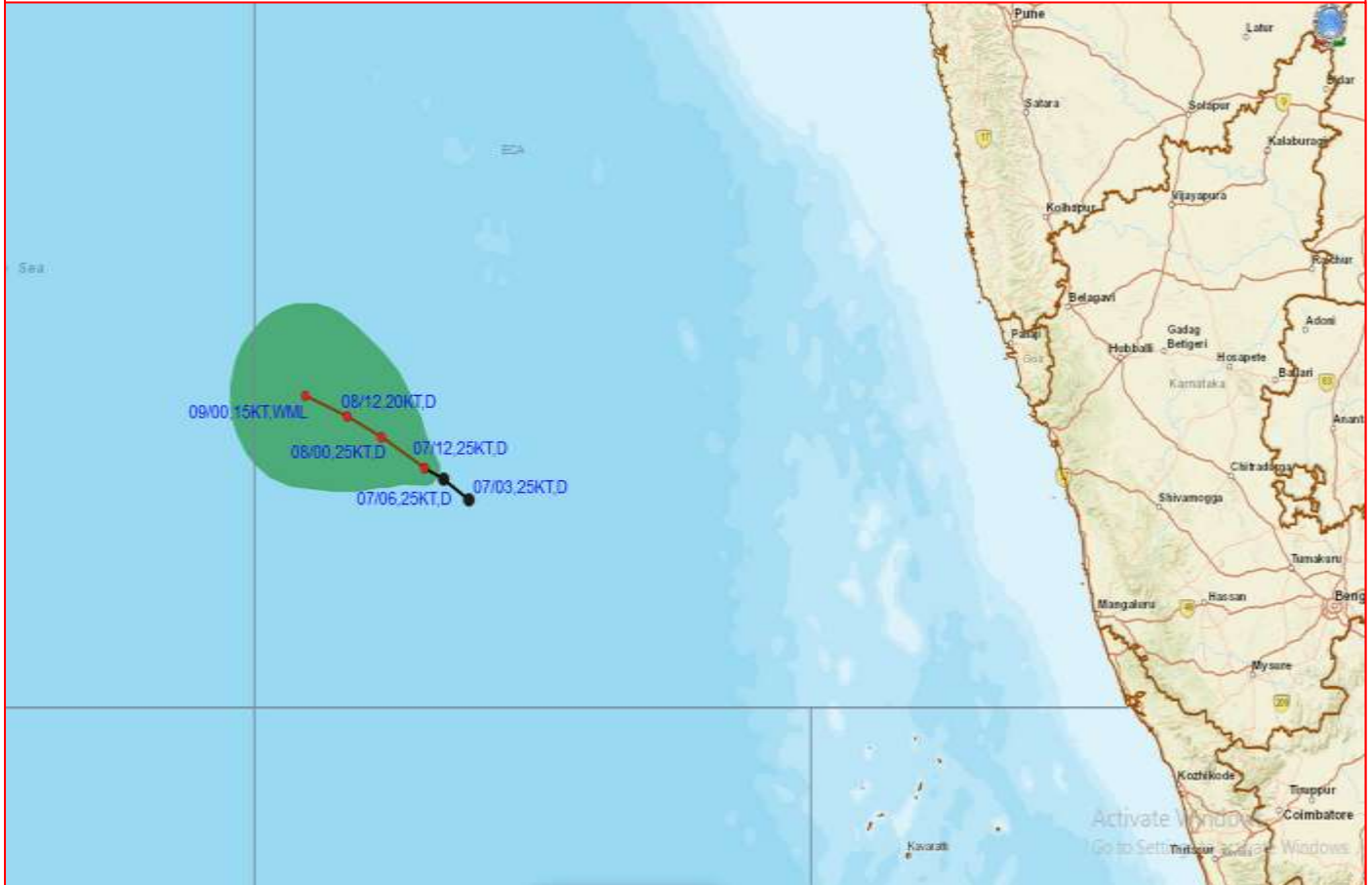
*Copy to: ACWC Mumbai/ CWC Ahmedabadr/MC Goa/CWC Thiruvananthapuram*

**LEGEND: Heavy Rainfall:** 64.5 to 115.5mm, **Very Heavy Rainfall:** 115.6 to 204.4mm **Most Places:** more than 76% of total stations, **Isolated Places:** Less than 25% of total stations





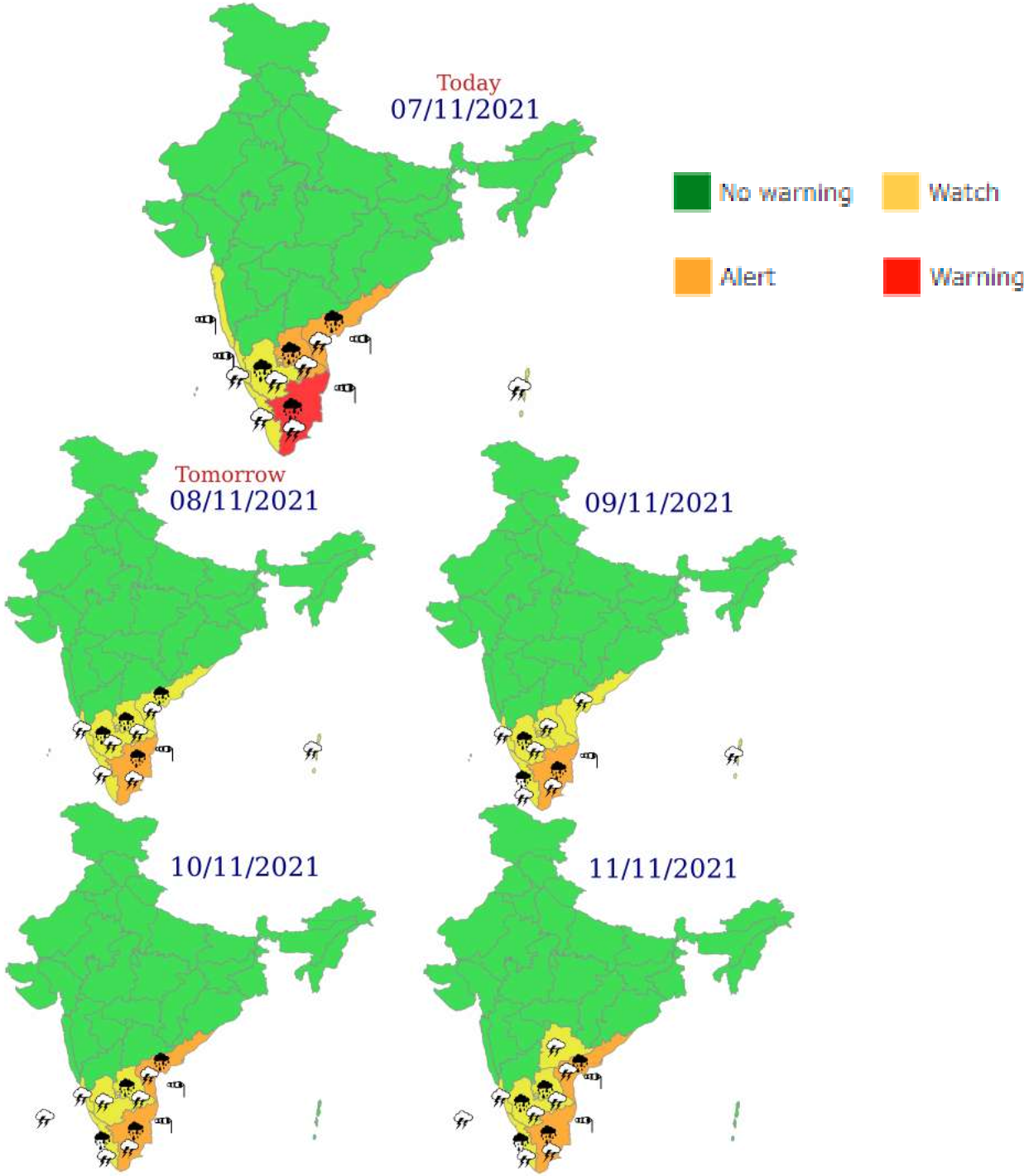
# OBSERVED AND FORECAST TRACK ALONGWITH CONE OF UNCERTAINTY OF DEPRESSION OVER EASTCENTRAL ARABIAN SEA BASED ON 1200 UTC OF 07<sup>TH</sup> NOVEMBER, 2021



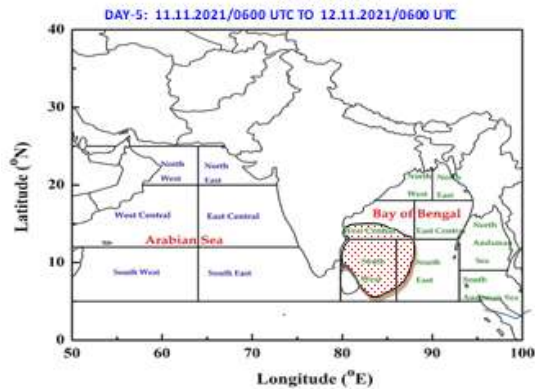
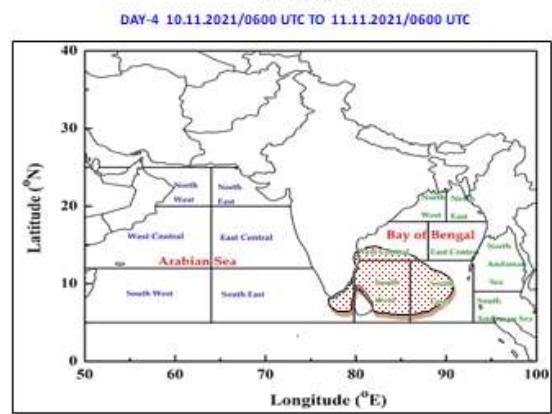
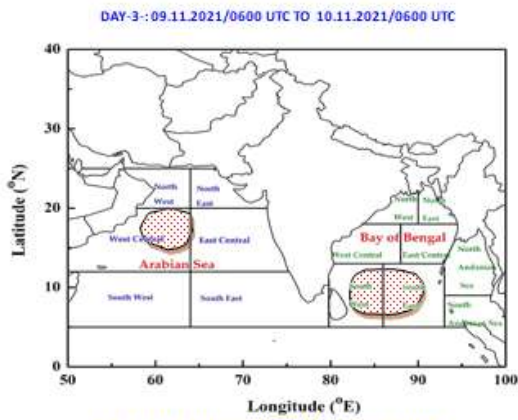
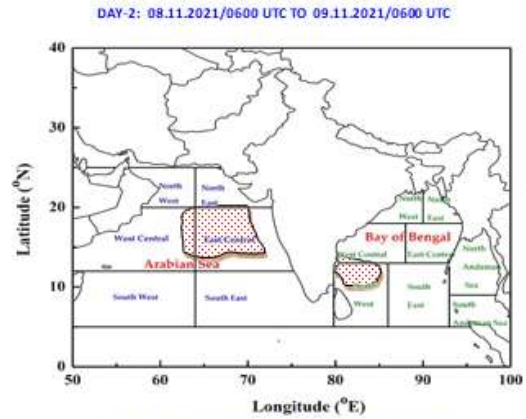
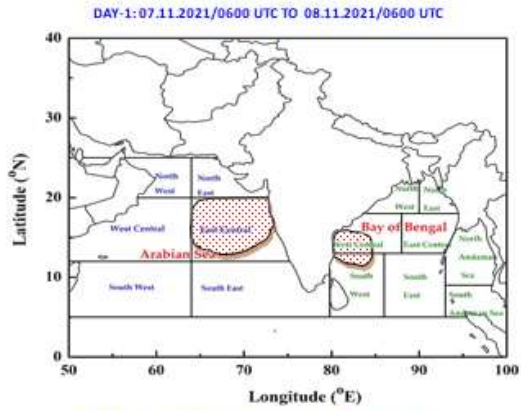
DATE/TIME IN UTC  
IST=UTC + 0530  
L: LOW PRESSURE AREA  
WML: WELL MARKED LOW PRESSURE AREA  
D: DEPRESSION (17-27 KT)  
DD: DEEP DEPRESSION (28-33 KT)  
CS: CYCLONIC STORM (34-47 KT)  
SCS: SEVERE CYCLONIC STORM (48-63KT)  
VSCS: VERY SEVERE CYCLONIC STORM (64-89 KT)  
ESCS: EXTREMELY SEVERE CYCLONIC STORM (90-119 KT)  
SuCS: SUPER CYCLONIC STORM ( $\geq 20$  KT)

-  LESS THAN 34 KT
-  34-47 KT
-   $\geq 48$  KT
-  OBSERVED TRACK
-  FORECAST TRACK
-  CONE OF UNCERTAINTY

# Meteorological Sub-division level heavy rainfall warning



**INDIA METEOROLOGICAL DEPARTMENT**  
**FISHERMAN WARNING FOR BAY OF BENGAL AND ARABIAN SEA**



**AREA UNDER FISHERMEN WARNING**

	40-50 KMPH GUSTING TO 60 KMPH (SQUALLY WEATHER)
	45-55 KMPH GUSTING TO 60 KMPH (SQUALLY WEATHER)
	50-60 KMPH GUSTING TO 70 KMPH (STRONG WIND)